



Lichfield Road,
Cannock, WS11 8EQ

Offers Over £335,000

Offers Over £335,000



Paul Carr Estate Agents are delighted to market this chain free three bedroom detached Bungalow on the sought after Lichfield Road with excellent access to local amenities, transport links and schools.

This property briefly comprises an expansive central hallway, three double bedrooms, 20ft+ Kitchen-Diner, 20ft+ Lounge and a rear conservatory.

The property frontage features a front lawn with decorative borders, a private tarmac driveway with space for multiple vehicles leading to a detached garage. The wrap around garden features a lawn, slabbed seating areas with mature planted beds.





Property Specification

Generously Sized Bungalow In The Heart Of Cannock
 Three Double Bedrooms
 Two Bathrooms
 20ft+ Kitchen-Diner
 20ft+ Lounge
 No Chain

Lounge
 20' 5" x 14' 3" (6.22m x 4.35m)

Kitchen-Diner
 9' 6" x 20' 7" (2.89m x 6.27m)

Conservatory
 9' 10" x 11' 11" (3.00m x 3.63m)

Bedroom One
 12' 4" x 14' 8" (3.75m x 4.47m)

En-Suite
 5' 10" x 3' 10" (1.77m x 1.18m)

Bedroom Two
 11' 3" x 14' 8" (3.42m x 4.47m)

Bedroom Three
 9' 1" x 9' 8" (2.77m x 2.95m)

Family Bathroom
 9' 1" x 5' 7" (2.77m x 1.69m)

Garage
 15' 5" x 12' 0" (4.69m x 3.65m)

Agent's Note:

Every care has been taken with the preparation of these Sales Particulars but they are for general guidance only and complete accuracy cannot be guaranteed. If there is any point which is of particular importance, professional verification should be sought. The mention of any fixtures, fittings and/or appliances does not imply they are in full efficient working order as they have not been tested. All dimensions are approximate. Photographs are reproduced for general information and it cannot be inferred that any item shown is included in the sale. These Sales Particulars do not constitute a contract or part of a contract.

Came on the market:

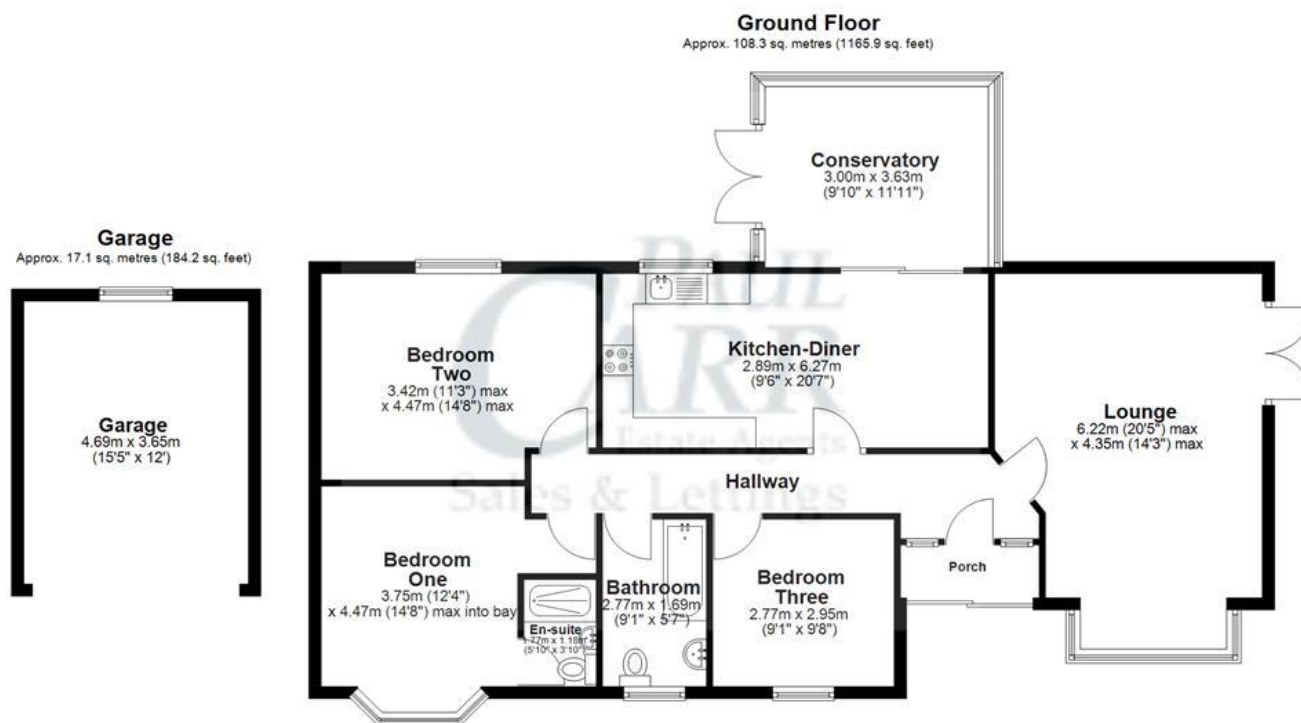
Identity Verification Fee - We are required by law to conduct anti-money laundering checks on all those buying a property as part of our due diligence. As agents acting on behalf of the seller, we are required to verify the identity of all purchasers once an offer has been accepted, subject to contract. The initial checks are carried out on our behalf by Lifetime Legal. A non-refundable administration fee of £40 + VAT (£48 including VAT) applies which covers the cost of obtaining relevant data and any manual checks and monitoring which might be required. This fee will need to be paid by you in advance of us issuing a memorandum of sale, directly to Lifetime Legal, and is non-refundable.

Viewer's Note:

Services connected:
 Council tax band: D
 Tenure: Freehold

Floor Plan

This floor plan is not drawn to scale and is for illustration purposes only



Energy Efficiency Rating

**New
Instruction
Awaiting
E.P.C.**

Map Location

